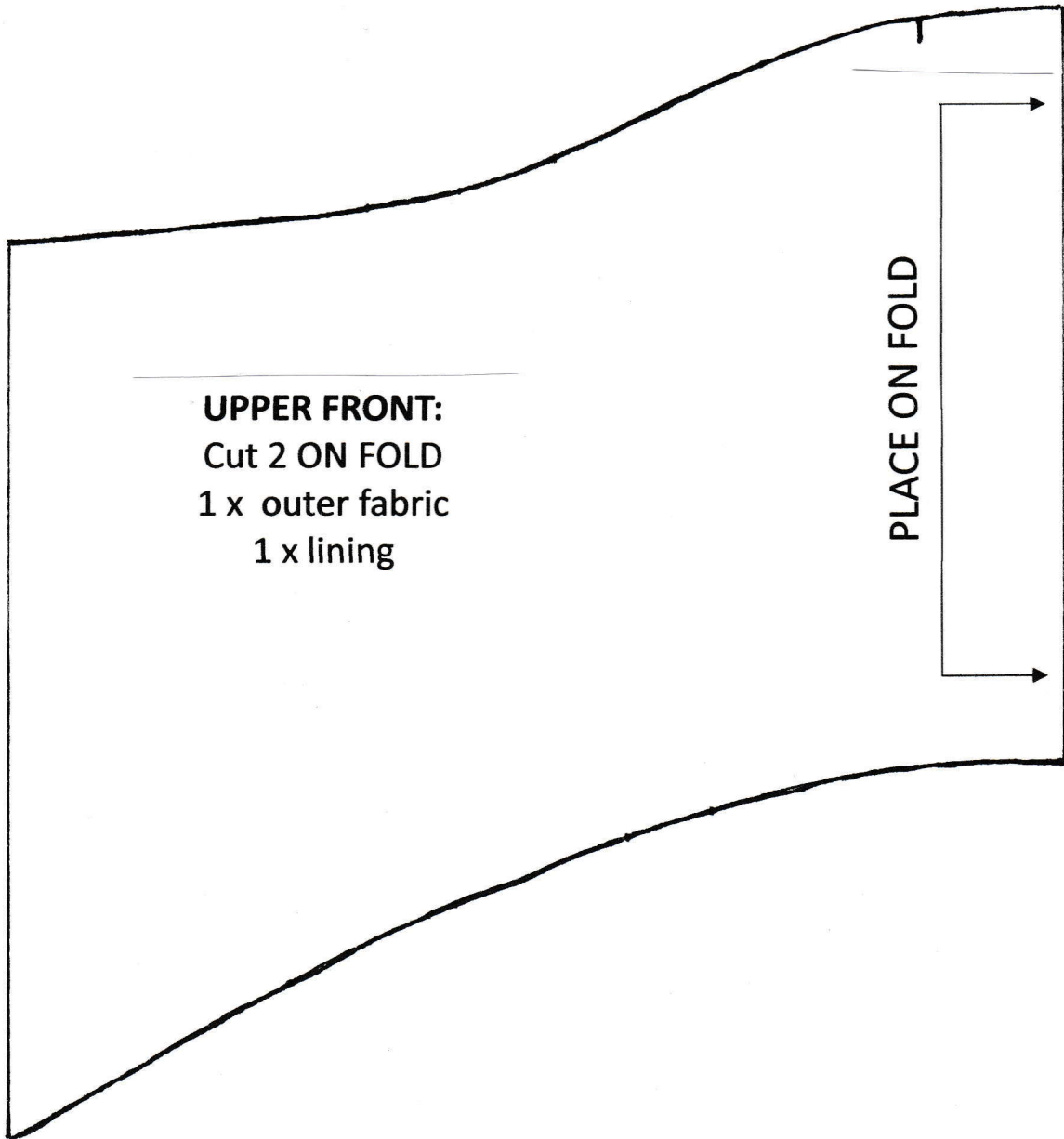
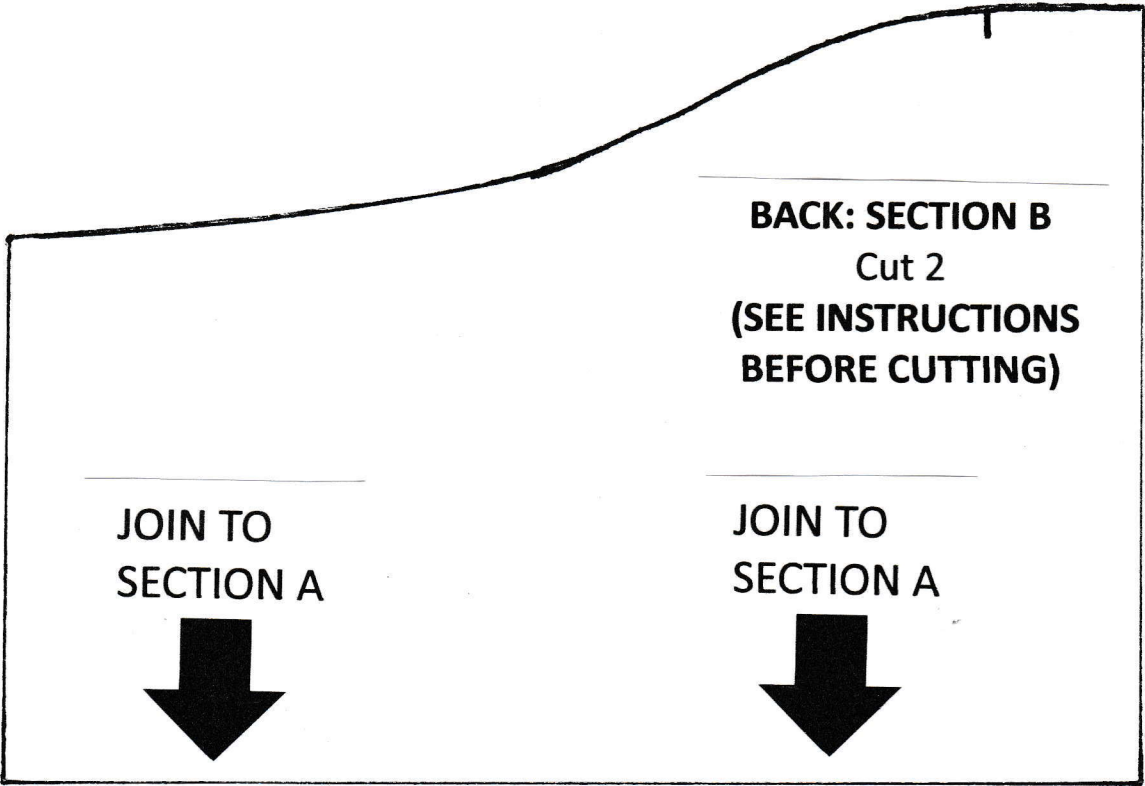


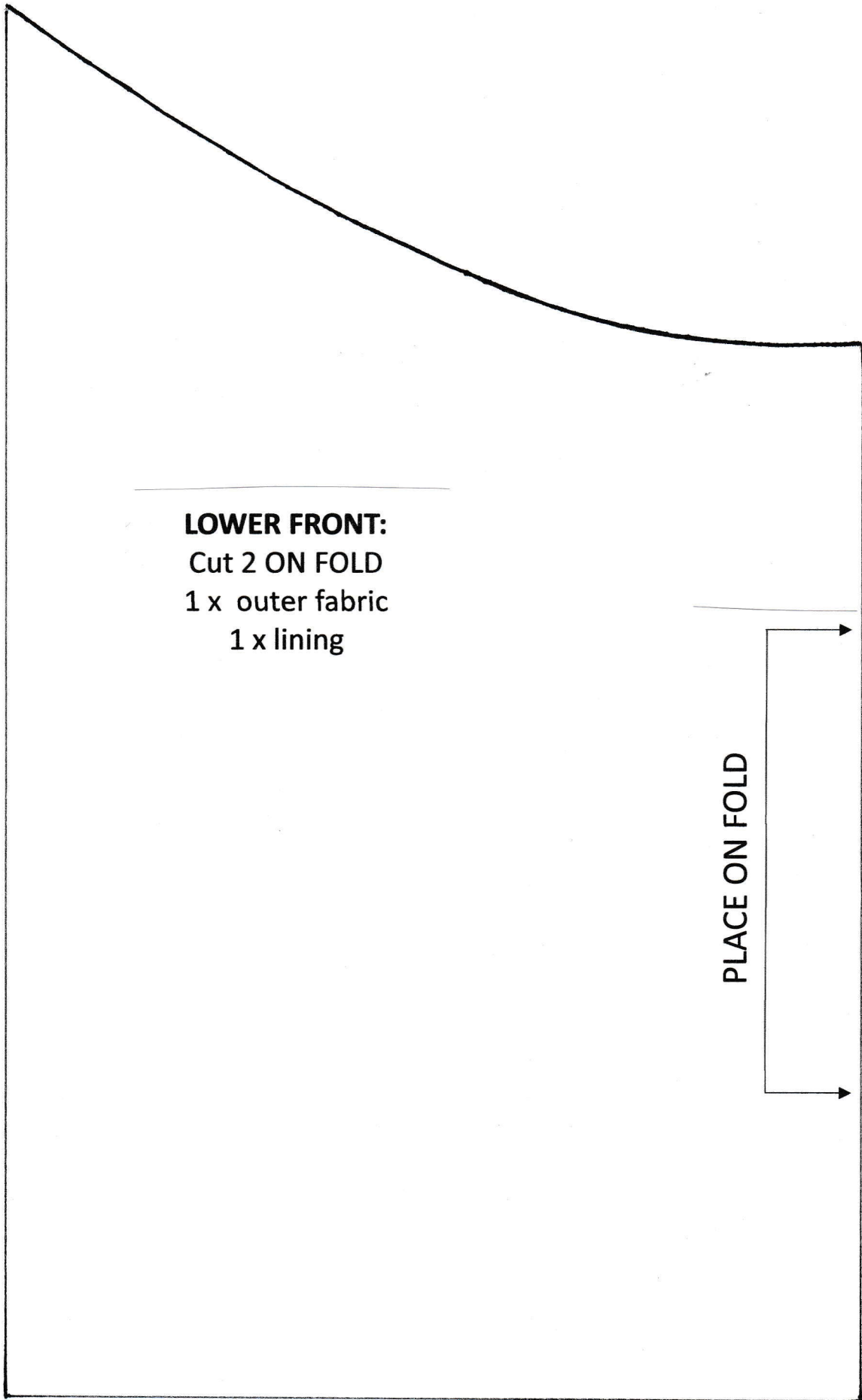
OVERLAP- USE TO JOIN PATTERN SECTION B BEFORE CUTTING FABRIC

BACK: SECTION A
Cut 2 on fold
**(SEE INSTRUCTIONS
BEFORE CUTTING)**
1 x outer
1 x lining

PLACE ON FOLD

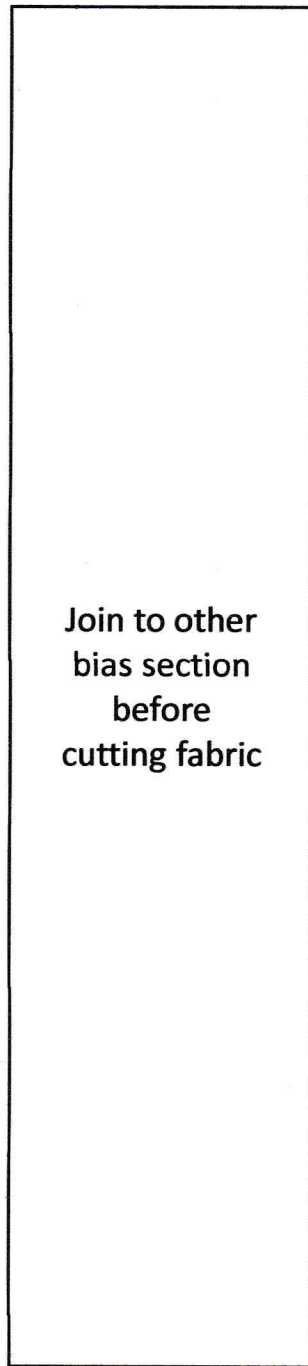
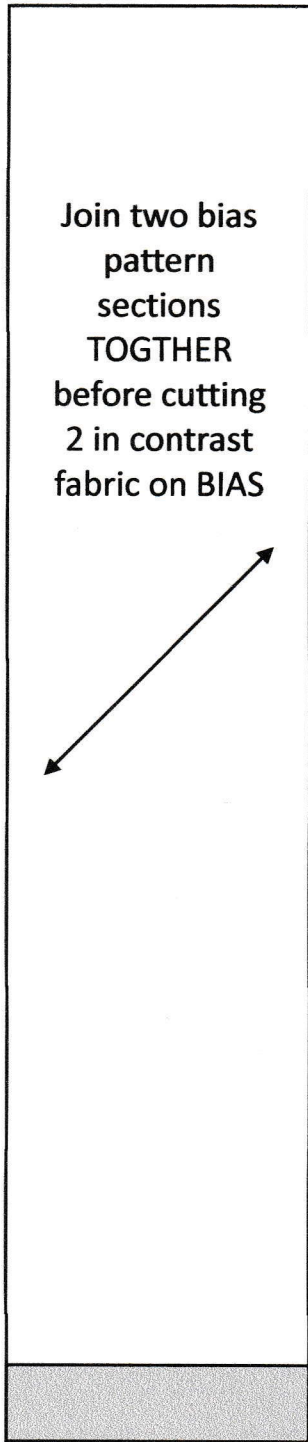






LOWER FRONT:
Cut 2 ON FOLD
1 x outer fabric
1 x lining

PLACE ON FOLD



OVERLAP- USE TO JOIN TWO BIAS PATTERN SECTIONS TOGETHER BEFORE CUTTING FABRIC

To complete your peg bag you will need:

65cms x 45cms of outer fabric. I like to use curtain fabric for this as it has a little more body.

65cms x 45cms of lining fabric. Any cotton fabric is suitable for the lining.

Some fabric scraps big enough to cut the two bias strips which will be used for the trim on the front of your peg bag.

An old coat hanger cut to size (see below) 26cms finished width

