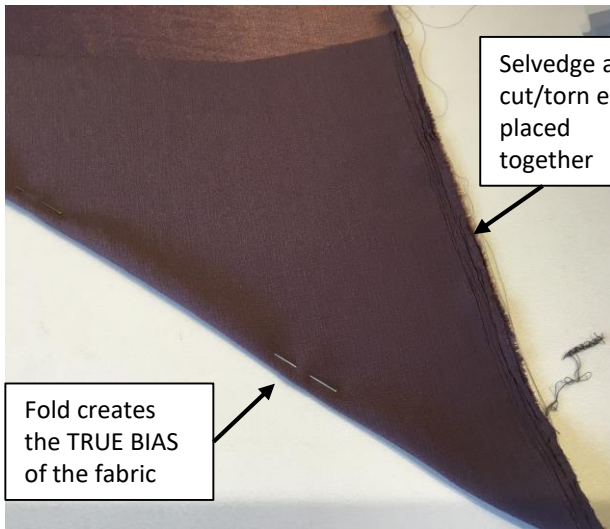


Rouleau Loops & Cover Buttons



1. Prepare your fabric by cutting or preferably tearing your fabric at right angles to the selvage. Find the TRUE BIAS of your fabric by folding your fabric so that the selvage and your new cut/torn edge are together. The folded edge you create will be the true bias of your fabric.



2. Pin along folded edge and mark a 4cm line parallel to fold

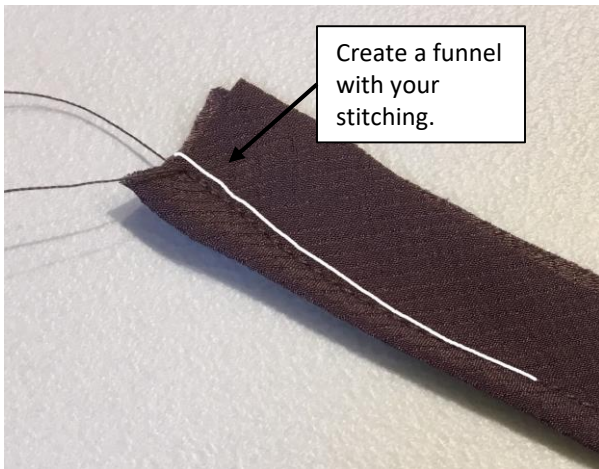


3. Cut along marked line and through fold. This will give you TWO bias strips to work with.

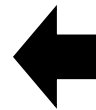


4. With RIGHT sides together fold your strip LENGTHWAYS. Match cut edges and pin.

Rouleau Loops & Cover Buttons



5. Where you stitch is essential. You will need to create a little 'funnel' at the beginning of your stitching. I have drawn a line in white to help you see where my stitch line is. Start at 5mm from the fold and taper down to 3mm from the fold for the majority of your stitch line.



6. Trim away the excess seam allowance to within 2-3mm from stitch line.



7. Slide your rouleau loop turner through the channel you have created. Start at the narrow end and pop out at the wider 'funnel' end.

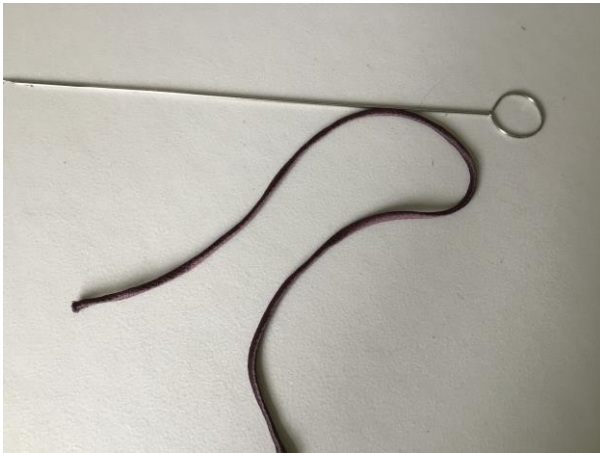


8. Piece through the fabric with the little flange you have on your rouleau loop turner about 6mm from the edge. Close the flange then gentle pull and encourage the end of you fabric to start turning into the channel.

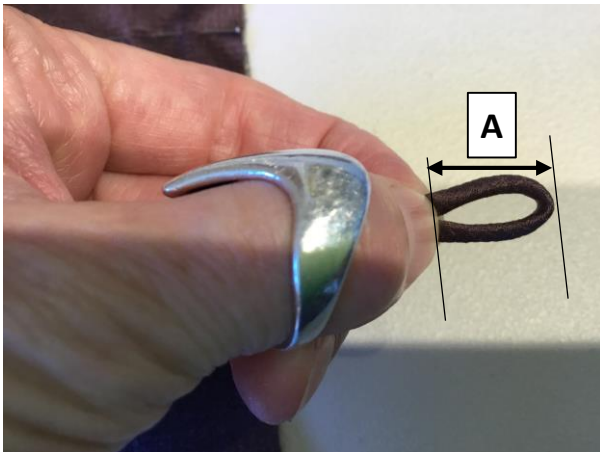
Rouleau Loops & Cover Buttons



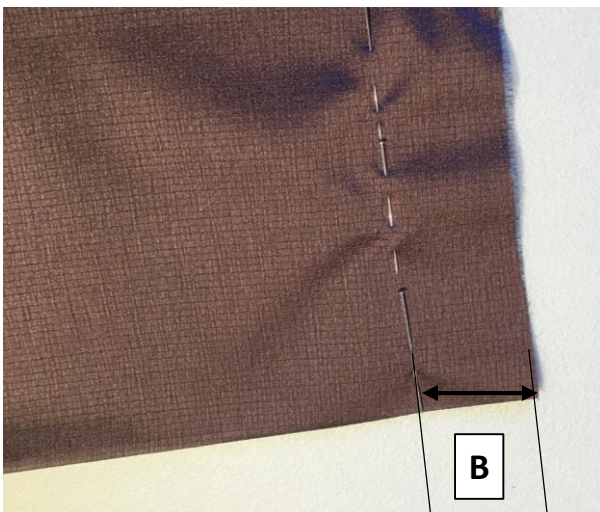
9. Very gentle keep pulling and encouraging your fabric to pull through the channel. I've found it best to do this quite slowly so that a 'knot' of fabric doesn't accumulate where the fabric is turning in on itself.



10. Once your fabric is all pulled through you can detach to turn and breathe a sigh of relief!

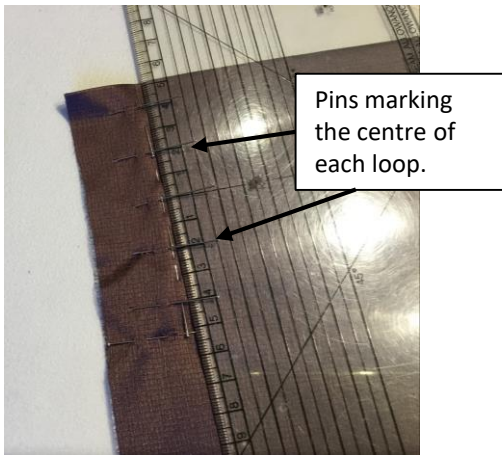


11. Now work out the size your loops need to be. I pinch a section of the rouleau between my fingers and just keep testing until I get it how I want it. Measure the distance from your fingers to the fold (**A**).

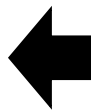


12. Add your seam allowance PLUS distance **A** together (**B**). Measure & place a line of pins (you can tack a line if you prefer) parallel to finished garment edge.

Rouleau Loops & Cover Buttons



13. Now measure and place a pin at 90 degrees to your first line to represent the centre of each loop.



14. Stitch your loops into place by manipulating your rouleau loop strip between your stitch line and your marked line, turning on your pins which mark the centres of your finished loops.



15. Once your Loop have been stitch in place, you are ready to complete your garment. Cover button kits are available but I prefer to get my buttons covered for me by www.harlequin-uk.com

